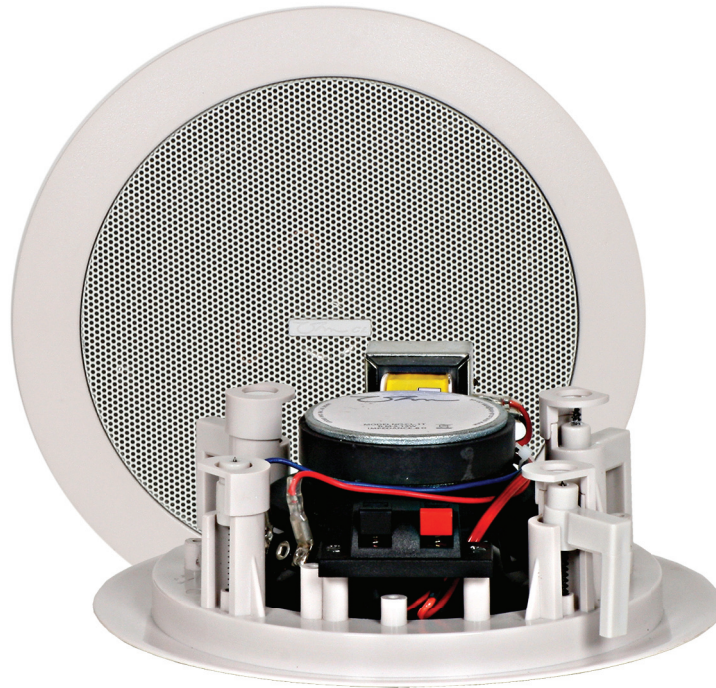


CL-1T Ceiling Speaker Instruction Manual



The CL-1T is a compact coaxial ceiling speaker designed to be both aesthetically invisible and give a smooth linear sound. The ceiling speaker blends in with its surroundings whilst the full range response from OHM's proprietary drivers creates a fuller, richer, tone.

CL-1T is designed with the listener and installer in mind. The coaxial drivers give an even 140° conical dispersion ensuring wide coverage while the full range driver gives extra depth to any source. Integrated quick-lock brackets and push connectors for input signal make installation easy.

With a 30 watt, 5¼" woofer, the CL-1T can be used as 8 Ohm, 100 V or 70 V using the supplied transformer with 0.8, 1.5, 3, 6 (100 V) and 0.4, 0.75, 1.5, 3(70 W) tapping.

The tiny diameter of Ø167 mm x 86 mm makes this ceiling speaker very discreet. With a frequency range of 80 Hz - 20 kHz, the CL-1T is capable of most playback scenarios where discretion is required.

The final look of the CL-1T is an attractive white colour ABS resin finish with complementary grill that is designed to blend into any décor.

The rear connectors have two push fit speaker cable terminals. Com, Input. Voltage and tapping are selectable by altering the wire on the supplied transformer.

Key Features:

- Quick-lock system ensures easy installation
- Wide dispersion pattern
- Multiple sizes offer response and SPL to meet all requirements

Conformity Details:

- EN 62368-1:2014/AC:2015
- EN 62479:2010
- ETSI EN 301 489-1 V2.1.1 (2017-02)
- ETSI EN 301 489-17 V3.1.1 (2017-02)
- The CL-1T complies with the essential requirements of directive 2014/53/EU article 3.

Technical Specifications

Design

5¼" Full Range

Impedance

8Ω / 100V / 70V

Tapping Watts

100V :- 0.8, 1.5, 3, 6

70V :- 0.4, 0.75, 1.5, 3

IMP (Ω) :- 13k, 6.7k, 3.3k, 1.7k

Power Handling (RMS)

15 Watts (continuous)

Max. Power Handling (RMS)

30 Watts (program)

60 Watts (peak 10 ms)

Sensitivity 2.83V / 1m

88 dB

Max. SPL

99.5 dB (cont. max SPL / 1m)

105.5 dB peak

Frequency Response ±3 dB

80 Hz - 20 kHz

Dispersion

140° Conical

SYSTEM OPERATION

Recommended Amplification

-

System Controller

Ohm DSP Solutions

Speaker Cables

Min - 2 x 1 mm²

Recommended - 2 x 1.5 mm²

PRODUCT FEATURES

Components

1 x 5¼" Low Frequency Driver

Crossover

Passive - 4 kHz

LPF -

HPF -

Connectors

Spring loaded terminal

Dimensions (mm) (Ø x h)

Ø203 x 86

Hole Cutout (mm Ø)

Ø167

Ceiling Thickness (mm)

10 - 35

Weight (kg)

0.9

Shipping Weight (kg)

1 (1 cabinet per carton)

Colour

White Ral9003

Options

Available in white or Ral colours on request)

Rigging

-

HARDWARE

Fitted as Standard

-

Additional Descriptive Data

Attractive white colour ABS resin finish with complementary off white grill suits any decor, Ohm logo.

Installation Instructions

The installation of this OHM product couldn't be easier:

1. Ensure there is enough clear space to house the speaker.
2. Take the template provided, position on the ceiling at the point where the speaker will be fitted, draw around the circle and cut a hole in the ceiling to fit.
3. Remove the grill from the speaker by gently pushing the mounting poles down until they ease the grill out, position the rear of the speaker facing into the hole. (fig. 1)
4. Connect speaker to amplification/system ensuring all connections are correct. (fig. 2)
5. Turn the plastic fixing points until the ends are located over the ceiling, tighten the screw until the speaker is clamped on to the ceiling. (fig. 3)
6. Replace the speaker grill. (fig. 4)
7. Turn on music source and enjoy the amazing sound of the OHM loudspeaker.

Mounting Instructions

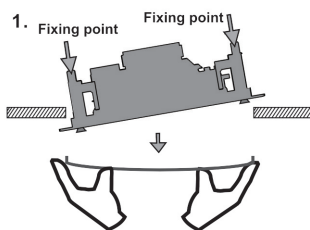


Fig.1

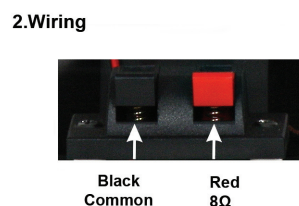


Fig.2

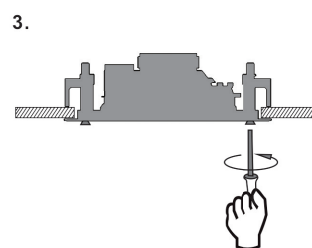


Fig.3

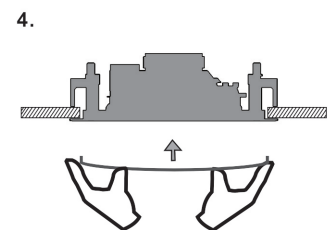
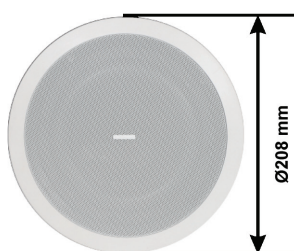
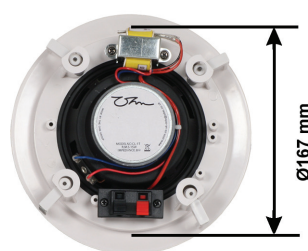


Fig.4

Overall Diameter



Mounting Diameter



Depth



CL-1T Dimensions

